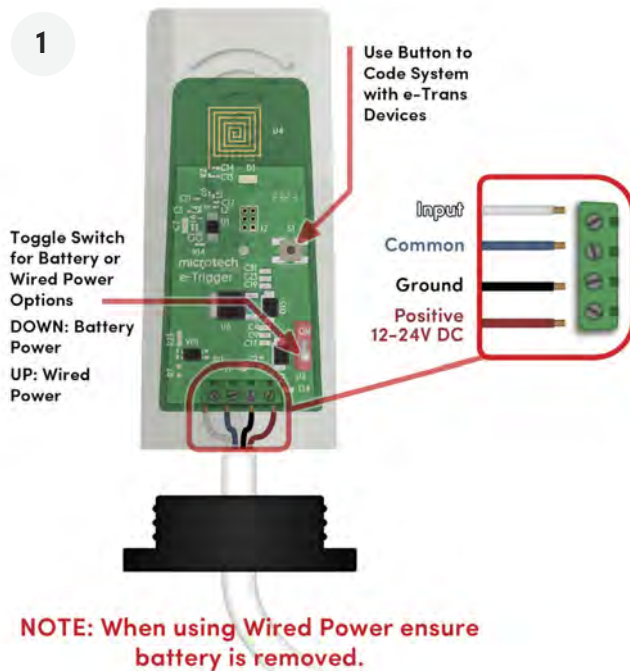


# e-TRIGGER

## USER GUIDE

### Specifications

Frequency:	433.39MHz
On Board Power supply:	3V CR2045 battery (not supplied)
External battery input:	10-36VDC
Input protection:	Opto isolator
Wire input hole diameter:	4.4mm to 6mm



### STEP 1:

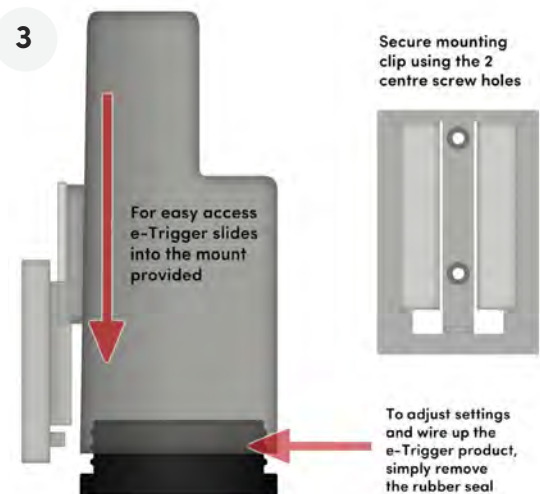
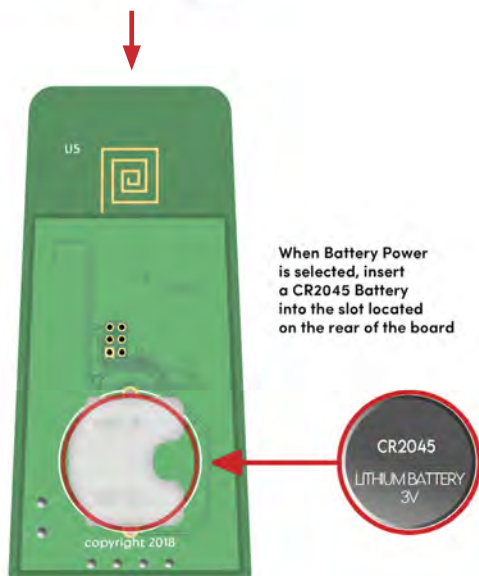
1. Wire the e-Trigger into the output relay of the third-party device using the COM and INPUT terminals on the e-Trigger. Now either fit a 3V CR2045 battery (not supplied) or wire into the DC power supply from the third-party device. Ensure you don't fit battery when using the power supply from another source.
2. Battery switch should be OFF for use with battery and ON for use with 12-24VDC external supply.

### STEP 2:

Code the e-Trigger into the e-Trans transceiver following the instructions on the next page.

### STEP 3:

Fit the post bracket and slide the e-Trigger into position.



## Programming the e-Trigger into the e-Trans 50 and 200 version 2.0

### e-Trans 50

1. Press the Code button on the e-Trans 50 and release, now press the Code button on the e-Trigger once, the Blue LED will flash on the e-Trans 50, now press Code again to confirm.
2. Follow on with another device or press Code again to exit Code Learn.

### e-Trans 200

1. Rotate the rotary switch until you see 'Code Device', now press down on the rotary switch to enter coding and the screen will show 'Code Learn'.
2. Now press the Code button on the e-Trigger and release, the screen will show remote number.
3. Press the Code button on the e-Trigger again and the screen will show 'Remote Confirm'. Follow on with another device or press Code again to exit Code Learn.

## Programming the e-Trigger into e-Trans 50 and e-Trans 100 version 3.0

### One Press Coding

1. Press the Code button on the e-Trans 50 and release, now press the Code button on the e-Trigger once and the Blue LED will flash on the e-Trans 50, indicating coding sequence is complete. Follow on with another device or just press Code again to exit Code Learn.
2. Press Code button 1 or Code button 2 on the e-Trans 100 and release, now press the Code button on the e-Trigger once and the Blue LED will flash on the e-Trans 100 indicating coding sequence is complete. Follow on with another device or press Code again to exit code learn.

**NOTE:** Code Learn will exit after 5 seconds if no remotes are received.

## Programming the e-Trigger into e-Trans 200-300 or e-Gate controller version 3.0

### One Press Coding

1. Rotate the rotary switch until you see Code Device, now press down on the rotary switch to enter coding sequence, the screen will show 'Code Learn'.
2. Now press the Code button on the e-Trigger and release, the screen will show 'Remote Coded'. Follow on with another device or press Code again to exit Code Learn.

